



Cytokeratin 7 Monoclonal Antibody

Catalog No	BYab-02948
Isotype	IgG
Reactivity	Human;Mouse;Rat;Bovine
Applications	WB;IF
Gene Name	KRT7
Protein Name	Keratin type II cytoskeletal 7
Immunogen	Purified recombinant human Cytokeratin 7 (N-terminus) protein fragments expressed in E.coli.
Specificity	Cytokeratin 7 Monoclonal Antibody detects endogenous levels of Cytokeratin 7 protein.
Formulation	Purified mouse monoclonal in buffer containing 0.1M Tris-Glycine (pH 7.4, 150 mM NaCl) with 0.2% sodium azide, 50% glycerol.
Source	Monoclonal, Mouse
Purification	Affinity purification
Dilution	Western Blot: 1/1000 - 1/2000. Immunofluorescence: 1/100 - 1/500. Not yet tested in other applications.
Concentration	1 mg/ml
Purity	≥90%
Storage Stability	-20°C/1 year
Synonyms	KRT7; SCL; Keratin; type II cytoskeletal 7; Cytokeratin-7; CK-7; Keratin-7; K7; Sarcolectin; Type-II keratin Kb7
Observed Band	
Cell Pathway	Cytoplasm .
Tissue Specificity	Expressed in cultured epidermal, bronchial and mesothelial cells but absent in colon, ectocervix and liver. Observed throughout the glandular cells in the junction between stomach and esophagus but is absent in the esophagus.
Function	function:Blocks interferon-dependent interphase and stimulates DNA synthesis in cells. Involved in the translational regulation of the human papillomavirus type 16 E7 mRNA (HPV16 E7).,induction:Up-regulated by retinoic acid.,mass spectrometry: PubMed:11840567,miscellaneous:There are two types of cytoskeletal and microfibrillar keratin: I (acidic; 40-55 kDa) and II (neutral to basic; 56-70 kDa).,PTM:Arg-20 is dimethylated, probably to asymmetric dimethylarginine.,similarity:Belongs to the intermediate filament family.,subunit:Heterotetramer of two type I and two type II keratins. Interacts with eukaryotic translation initiator factor 3 (eIF3) subunit EIF3S10 and with HPV16

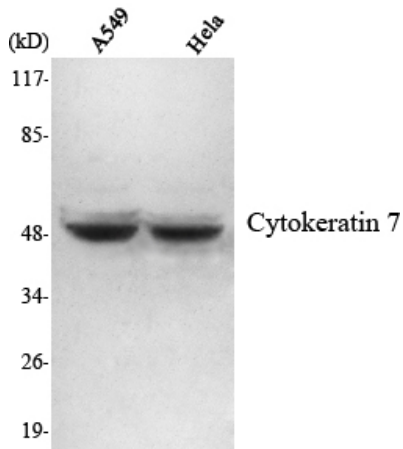
Nanjing BYabscience technology Co.,Ltd



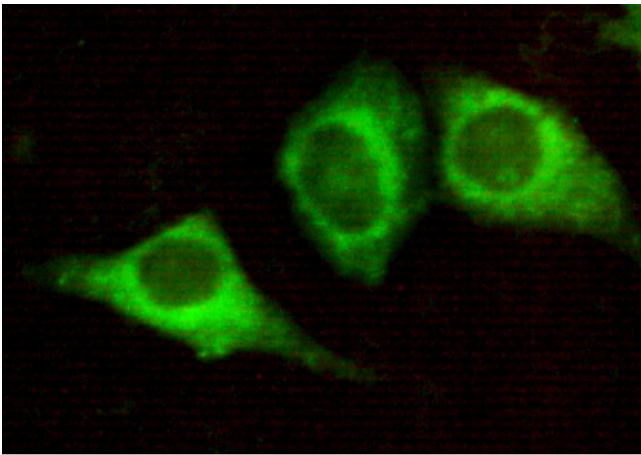
	E7.,tissue specificity:Expressed in cultured epidermal, bronchial and mesothelial cells but absent in colon, ectocervix and liver. Observed throughout the glandular cells in the junction between stomach and esophagus bu
Background	keratin 7(KRT7) Homo sapiens The protein encoded by this gene is a member of the keratin gene family. The type II cytokeratins consist of basic or neutral proteins which are arranged in pairs of heterotypic keratin chains coexpressed during differentiation of simple and stratified epithelial tissues. This type II cytokeratin is specifically expressed in the simple epithelia lining the cavities of the internal organs and in the gland ducts and blood vessels. The genes encoding the type II cytokeratins are clustered in a region of chromosome 12q12-q13. Alternative splicing may result in several transcript variants; however, not all variants have been fully described. [provided by RefSeq, Jul 2008],
matters needing attention	Avoid repeated freezing and thawing!
Usage suggestions	This product can be used in immunological reaction related experiments. For more information, please consult technical personnel.



Products Images



Western Blot analysis using Cytokeratin 7 Monoclonal Antibody against A459, HeLa cell lysate.



Immunofluorescence analysis of HeLa cells using Cytokeratin 7 Monoclonal Antibody.

Nanjing BYabs science technology Co.,Ltd

网址: www.njbybio.com

官方热线: 025-5229-8998

监督电话: 15950492658