



# Matrilin-1 Monoclonal Antibody

<b>Catalog No</b>	BYab-02935
<b>Isotype</b>	IgG
<b>Reactivity</b>	Human
<b>Applications</b>	WB;IF;ELISA
<b>Gene Name</b>	MATN1
<b>Protein Name</b>	Cartilage matrix protein
<b>Immunogen</b>	Purified recombinant fragment of human Matrilin-1 expressed in E. Coli.
<b>Specificity</b>	Matrilin-1 Monoclonal Antibody detects endogenous levels of Matrilin-1 protein.
<b>Formulation</b>	Ascitic fluid containing 0.03% sodium azide,0.5% BSA, 50%glycerol.
<b>Source</b>	Monoclonal, Mouse
<b>Purification</b>	Affinity purification
<b>Dilution</b>	Western Blot: 1/500 - 1/2000. Immunofluorescence: 1/200 - 1/1000. ELISA: 1/10000. Not yet tested in other applications.
<b>Concentration</b>	1 mg/ml
<b>Purity</b>	≥90%
<b>Storage Stability</b>	-20°C/1 year
<b>Synonyms</b>	MATN1; CMP; CRTM; Cartilage matrix protein; Matrilin-1
<b>Observed Band</b>	
<b>Cell Pathway</b>	Secreted, extracellular space, extracellular matrix.
<b>Tissue Specificity</b>	Muscle,Trachea,
<b>Function</b>	function:Cartilage matrix protein is a major component of the extracellular matrix of non-articular cartilage. It binds to collagen.,similarity:Contains 1 EGF-like domain.,similarity:Contains 2 VWFA domains.,subunit:Homotrimer.,
<b>Background</b>	This gene encodes a member of von Willebrand factor A domain containing protein family. This family of proteins are thought to be involved in the formation of filamentous networks in the extracellular matrices of various tissues. Mutations of this gene have been associated with variety of inherited chondrodysplasias. [provided by RefSeq, Jul 2008],
<b>matters needing attention</b>	Avoid repeated freezing and thawing!

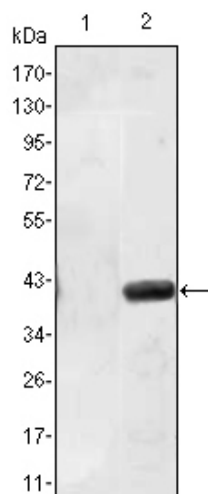
**Nanjing BYabscience technology Co.,Ltd**



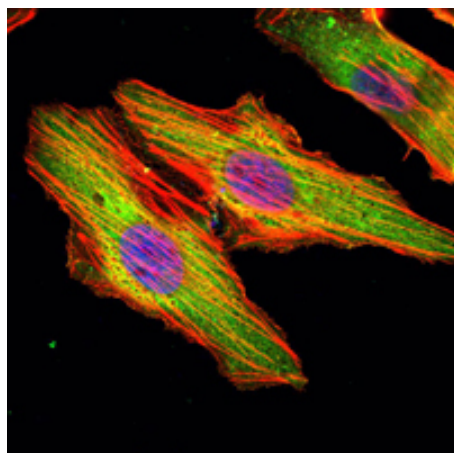
## Usage suggestions

This product can be used in immunological reaction related experiments. For more information, please consult technical personnel.

## Products Images



Western Blot analysis using Matrilin-1 Monoclonal Antibody against HEK293 (1) and MATN1-hlgGfc transfected HEK293 (2) cell lysate.



Immunofluorescence analysis of HeLa cells using Matrilin-1 Monoclonal Antibody (green). Blue: DRAQ5 fluorescent DNA dye. Red: Actin filaments have been labeled with Alexa Fluor-555 phalloidin.

**Nanjing BYabs science technology Co.,Ltd**

网址: [www.njbybio.com](http://www.njbybio.com)

官方热线: 025-5229-8998

监督电话: 15950492658