



KLF15 Monoclonal Antibody

Catalog No	BYab-02934
Isotype	IgG
Reactivity	Human
Applications	WB;ELISA
Gene Name	KLF15
Protein Name	Krueppel-like factor 15
Immunogen	Purified recombinant fragment of human KLF15 expressed in E. Coli.
Specificity	KLF15 Monoclonal Antibody detects endogenous levels of KLF15 protein.
Formulation	Ascitic fluid containing 0.03% sodium azide,0.5% BSA, 50%glycerol.
Source	Monoclonal, Mouse
Purification	Affinity purification
Dilution	Western Blot: 1/500 - 1/2000. ELISA: 1/10000. Not yet tested in other applications.
Concentration	1 mg/ml
Purity	≥90%
Storage Stability	-20°C/1 year
Synonyms	KLF15; KKLF; Krueppel-like factor 15; Kidney-enriched krueppel-like factor
Observed Band	
Cell Pathway	Nucleus .
Tissue Specificity	Highly expressed in liver, skeletal muscle, and kidney. Expressed in cardiomyocytes. Expression is highly reduced in cardiac tissue of patients with non-ischemic cardiomyopathy and aortic aneurysm, and in glomerular disease. Not expressed in bone marrow or lymphoid tissues.
Function	function:Transcriptional activator. Binds to the GA element of the CLCNKA promoter.,similarity:Belongs to the Sp1 C2H2-type zinc-finger protein family.,similarity:Contains 3 C2H2-type zinc fingers.,tissue specificity:Highly expressed in liver, followed by heart, skeletal muscle, and kidney. Not expressed in bone marrow or lymphoid tissues.,
Background	function:Transcriptional activator. Binds to the GA element of the CLCNKA promoter.,similarity:Belongs to the Sp1 C2H2-type zinc-finger protein family.,similarity:Contains 3 C2H2-type zinc fingers.,tissue specificity:Highly expressed in liver, followed by heart, skeletal muscle, and kidney. Not expressed in bone marrow or lymphoid tissues.,

Nanjing BYabscience technology Co.,Ltd



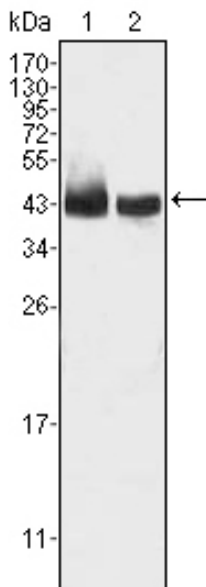
matters needing attention

Avoid repeated freezing and thawing!

Usage suggestions

This product can be used in immunological reaction related experiments. For more information, please consult technical personnel.

Products Images



Western Blot analysis using KLF15 Monoclonal Antibody against HepG2 (1) and SMMC-7721 (2) cell lysate.