



CIB1 Monoclonal Antibody

Catalog No	BYab-02917
Isotype	IgG
Reactivity	Human
Applications	WB;IHC;IF;ELISA
Gene Name	CIB1
Protein Name	Calcium and integrin-binding protein 1
Immunogen	Purified recombinant fragment of CIB1 expressed in E. Coli.
Specificity	CIB1 Monoclonal Antibody detects endogenous levels of CIB1 protein.
Formulation	Ascitic fluid containing 0.03% sodium azide,0.5% BSA, 50%glycerol.
Source	Monoclonal, Mouse
Purification	Affinity purification
Dilution	WB: 1/500 - 1/2000. IHC: 1/200 - 1/1000. ELISA: 1/10000.. IF 1:50-200
Concentration	1 mg/ml
Purity	≥90%
Storage Stability	-20°C/1 year
Synonyms	CIB1; CIB; KIP; PRKDCIP; Calcium and integrin-binding protein 1; CIB; Calcium-and integrin-binding protein; CIBP; Calmyrin; DNA-PKcs-interacting protein; Kinase-interacting protein; KIP; SNK-interacting protein 2-28; SIP2-28
Observed Band	
Cell Pathway	Membrane; Lipid-anchor. Cell membrane, sarcolemma. Cell membrane. Apical cell membrane. Cell projection, ruffle membrane. Cell projection, filopodium tip. Cell projection, growth cone . Cell projection, lamellipodium . Cytoplasm. Cytoplasm, cytoskeleton. Cytoplasm, cytoskeleton, microtubule organizing center, centrosome. Cytoplasm, perinuclear region. Nucleus . Cell projection, neuron projection . Perikaryon . Colocalized with PPP3R1 at the cell membrane of cardiomyocytes in the hypertrophic heart (By similarity). Colocalized with NBR1 to the perinuclear region. Colocalizes with TAS1R2 in apical regions of taste receptor cells. Colocalized with RAC3 in the perinuclear area and at the cell periphery. Colocalized with PAK1 within membrane ruffles during cell spreading upon readhesion to fibr
Tissue Specificity	Ubiquitously expressed. Expressed in the epidermis, hair follicles and keratinocytes (PubMed:30068544). Detected in platelets and in cell lines of megakaryocytic and erythrocytic lineages. Both isoform 1 and isoform 2 are detected in various cancer cell lines, with isoform 2 being the predominant form

Nanjing BYabs science technology Co.,Ltd



(at protein level).

Function

function: May convert the inactive conformation of integrin alpha-IIb/beta3 to an active form through the binding to the integrin cytoplasmic domain., similarity: Contains 2 EF-hand domains., subunit: Monomer. Interacts with the heterodimeric integrin alpha-IIb/beta3. Interacts with the protein kinases PLK2/SNK and with the region immediately upstream of the kinase domain of DNA-PK. Interacts with PSEN2. Interacts with MYO1C., tissue specificity: Ubiquitous.,

Background

This gene encodes a member of the EF-hand domain-containing calcium-binding superfamily. The encoded protein interacts with many other proteins, including the platelet integrin alpha-IIb-beta-3, DNA-dependent protein kinase, presenilin-2, focal adhesion kinase, p21 activated kinase, and protein kinase D. The encoded protein may be involved in cell survival and proliferation, and is associated with several disease states including cancer and Alzheimer's disease. Alternative splicing results in multiple transcript variants. [provided by RefSeq, Apr 2013],

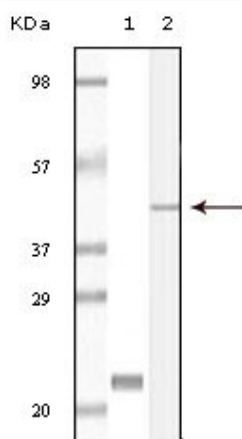
matters needing attention

Avoid repeated freezing and thawing!

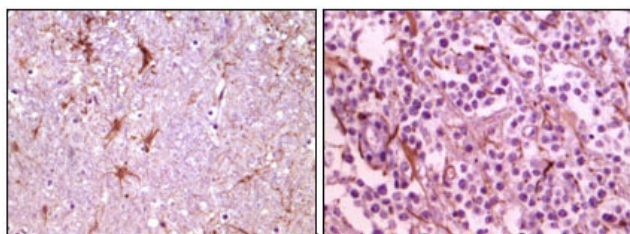
Usage suggestions

This product can be used in immunological reaction related experiments. For more information, please consult technical personnel.

Products Images



Western Blot analysis using CIB1 Monoclonal Antibody against truncated CIB1 recombinant protein (1) and A431 cell lysate (2).



Immunohistochemistry analysis of paraffin-embedded human thalamus (left) and glioma (right) tissue, showing membrane localization with DAB staining using CIB1 Monoclonal Antibody.

Nanjing BYabs science technology Co.,Ltd

网址: www.njbybio.com

官方热线: 025-5229-8998

监督电话: 15950492658