



COX19 Polyclonal Antibody

Catalog No	BYab-02542
Isotype	IgG
Reactivity	Human;Mouse
Applications	IHC;IF;ELISA
Gene Name	COX19
Protein Name	Cytochrome c oxidase assembly protein COX19
Immunogen	The antiserum was produced against synthesized peptide derived from human COX19. AA range:10-59
Specificity	COX19 Polyclonal Antibody detects endogenous levels of COX19 protein.
Formulation	Liquid in PBS containing 50% glycerol, 0.5% BSA and 0.02% sodium azide.
Source	Polyclonal, Rabbit,IgG
Purification	The antibody was affinity-purified from rabbit antiserum by affinity-chromatography using epitope-specific immunogen.
Dilution	IHC: 1/100 - 1/300. ELISA: 1/20000.. IF 1:50-200
Concentration	1 mg/ml
Purity	≥90%
Storage Stability	-20°C/1 year
Synonyms	COX19; Cytochrome c oxidase assembly protein COX19; hCOX19
Observed Band	
Cell Pathway	Cytoplasm, cytosol . Mitochondrion intermembrane space . Mitochondrion . Partitions between mitochondria and the cytosol in a copper-dependent manner. Enriched in the cytosol when intracellular copper concentrations are elevated. .
Tissue Specificity	Ubiquitously expressed. Highly expressed in skeletal muscle.
Function	function:May be required for the assembly of mitochondrial cytochrome c oxidase.,similarity:Belongs to the COX19 family.,similarity:Contains 1 CHCH domain.,tissue specificity:Ubiquitously expressed. Highly expressed in skeletal muscle.,
Background	COX19 encodes a cytochrome c oxidase (COX)-assembly protein. The <i>S. cerevisiae</i> Cox19 protein may play a role in metal transport to the mitochondrial intermembrane space and assembly of complex IV of the mitochondrial respiratory chain (Sacconi et al., 2005 [PubMed 16212937]).[supplied by OMIM, Mar 2008],

Nanjing BYabscience technology Co.,Ltd



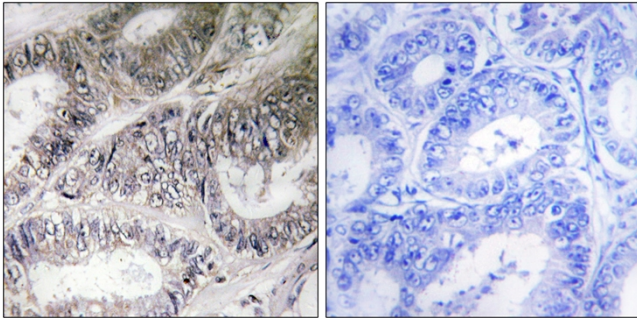
matters needing attention

Avoid repeated freezing and thawing!

Usage suggestions

This product can be used in immunological reaction related experiments. For more information, please consult technical personnel.

Products Images



Immunohistochemistry analysis of paraffin-embedded human colon carcinoma tissue, using COX19 Antibody. The picture on the right is blocked with the synthesized peptide.