



GPI Monoclonal Antibody

Catalog No	BYab-02328
Isotype	IgG
Reactivity	Human
Applications	WB;IHC;IF;ELISA
Gene Name	GPI
Protein Name	Glucose-6-phosphate isomerase
Immunogen	Purified recombinant fragment of human GPI expressed in E. Coli.
Specificity	GPI Monoclonal Antibody detects endogenous levels of GPI protein.
Formulation	Ascitic fluid containing 0.03% sodium azide,0.5% BSA, 50%glycerol.
Source	Monoclonal, Mouse
Purification	Affinity purification
Dilution	Western Blot: 1/500 - 1/2000. Immunohistochemistry: 1/200 - 1/1000. Immunofluorescence: 1/200 - 1/1000. ELISA: 1/10000. Not yet tested in other applications.
Concentration	1 mg/ml
Purity	≥90%
Storage Stability	-20°C/1 year
Synonyms	GPI; Glucose-6-phosphate isomerase; GPI; Autocrine motility factor; AMF; Neuroleukin; NLK; Phosphoglucose isomerase; PGI; Phosphohexose isomerase; PHI; Sperm antigen 36; SA-36
Observed Band	
Cell Pathway	Cytoplasm . Secreted .
Tissue Specificity	B-cell lymphoma,Brain,Skin,Spleen,Testis,
Function	catalytic activity:D-glucose 6-phosphate = D-fructose 6-phosphate.,disease:Defects in GPI are a cause of hereditary nonspherocytic hemolytic anemia (HA) [MIM:172400]. Severe GPI deficiency can be associated with hydrops fetalis, immediate neonatal death and neurological impairment.,function:Besides it's role as a glycolytic enzyme, mammalian GPI can function as a tumor-secreted cytokine and an angiogenic factor (AMF) that stimulates endothelial cell motility. GPI is also a neurotrophic factor (Neuroleukin) for spinal and sensory neurons.,online information:Phosphoglucose isomerase entry,online information:The Singapore human mutation and polymorphism

Nanjing BYabs science technology Co.,Ltd



database,pathway:Carbohydrate degradation; glycolysis; D-glyceraldehyde 3-phosphate and glyceroine phosphate from D-glucose: step 2/4.,PTM:Phosphorylation at Ser-185 by CK2 has been shown to decrease enzymatic activity and may contribute to s

Background

This gene encodes a member of the glucose phosphate isomerase protein family. The encoded protein has been identified as a moonlighting protein based on its ability to perform mechanistically distinct functions. In the cytoplasm, the gene product functions as a glycolytic enzyme (glucose-6-phosphate isomerase) that interconverts glucose-6-phosphate and fructose-6-phosphate. Extracellularly, the encoded protein (also referred to as neuroleukin) functions as a neurotrophic factor that promotes survival of skeletal motor neurons and sensory neurons, and as a lymphokine that induces immunoglobulin secretion. The encoded protein is also referred to as autocrine motility factor based on an additional function as a tumor-secreted cytokine and angiogenic factor. Defects in this gene are the cause of nonspherocytic hemolytic anemia and a severe enzyme deficiency can be associated with hydrops fetalis

matters needing attention

Avoid repeated freezing and thawing!

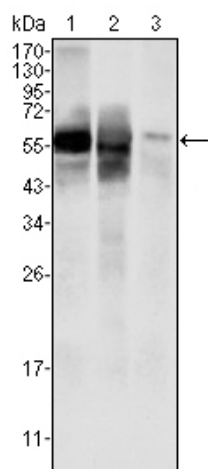
Usage suggestions

This product can be used in immunological reaction related experiments. For more information, please consult technical personnel.

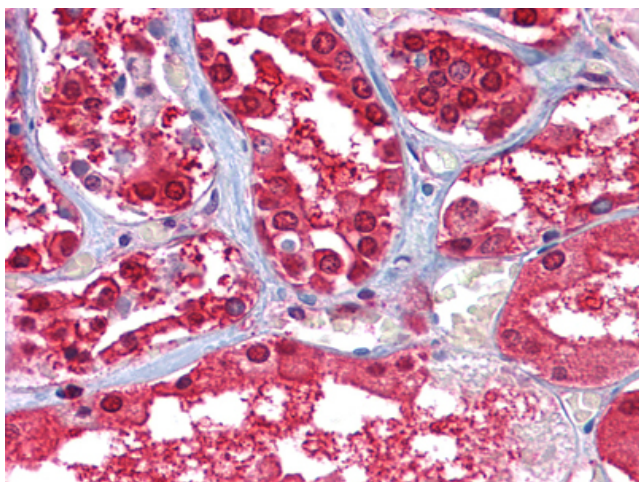
Nanjing BYabscience technology Co.,Ltd



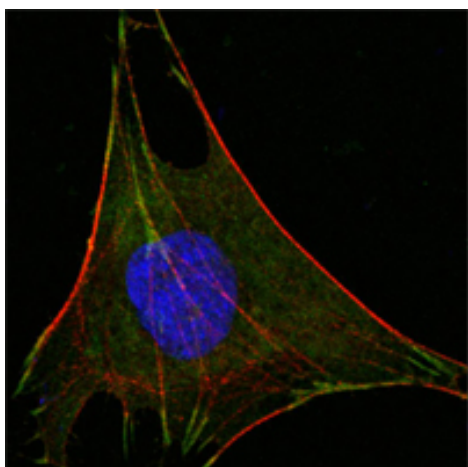
Products Images



Western Blot analysis using GPI Monoclonal Antibody against HepG2 (1), SMMC-7721 (2) cell lysate and rat liver tissues lysate (3).



Immunohistochemistry analysis of paraffin-embedded human Kidney tissues with AEC staining using GPI Monoclonal Antibody.



Confocal immunofluorescence analysis of L-02 cells using GPI Monoclonal Antibody (green). Red: Actin filaments have been labeled with DY-554 phalloidin. Blue: DRAQ5 fluorescent DNA dye.

Nanjing BYabs science technology Co.,Ltd

网址: www.njbybio.com

官方热线: 025-5229-8998

监督电话: 15950492658