



ALDH1A1 Monoclonal Antibody

Catalog No	BYab-02321
Isotype	IgG
Reactivity	Human
Applications	WB;IHC;IF;ELISA
Gene Name	ALDH1A1
Protein Name	Retinal dehydrogenase 1
Immunogen	Purified recombinant fragment of human ALDH1A1 expressed in E. Coli.
Specificity	ALDH1A1 Monoclonal Antibody detects endogenous levels of ALDH1A1 protein.
Formulation	Ascitic fluid containing 0.03% sodium azide,0.5% BSA, 50%glycerol.
Source	Monoclonal, Mouse
Purification	Affinity purification
Dilution	WB: 1/500 - 1/2000. IHC: 1/200 - 1/1000. ELISA: 1/10000.. IF 1:50-200
Concentration	1 mg/ml
Purity	≥90%
Storage Stability	-20°C/1 year
Synonyms	ALDH1A1; ALDC; ALDH1; PUMB1; Retinal dehydrogenase 1; RALDH 1; RaIDH1; ALDH-E1; ALHDII; Aldehyde dehydrogenase family 1 member A1; Aldehyde dehydrogenase; cytosolic
Observed Band	
Cell Pathway	Cytoplasm, cytosol . Cell projection, axon .
Tissue Specificity	Expressed by erythrocytes (at protein level).
Function	catalytic activity:Retinal + NAD(+) + H(2)O = retinoate + NADH.,function:Binds free retinal and cellular retinol-binding protein-bound retinal. Can convert/oxidize retinaldehyde to retinoic acid.,pathway:Cofactor metabolism; retinol metabolism.,similarity:Belongs to the aldehyde dehydrogenase family.,subunit:Homotetramer.,
Background	The protein encoded by this gene belongs to the aldehyde dehydrogenase family. Aldehyde dehydrogenase is the next enzyme after alcohol dehydrogenase in the major pathway of alcohol metabolism. There are two major aldehyde dehydrogenase isozymes in the liver, cytosolic and mitochondrial, which are encoded by distinct genes, and can be distinguished by their electrophoretic

Nanjing BYabs science technology Co.,Ltd



mobility, kinetic properties, and subcellular localization. This gene encodes the cytosolic isozyme. Studies in mice show that through its role in retinol metabolism, this gene may also be involved in the regulation of the metabolic responses to high-fat diet. [provided by RefSeq, Mar 2011],

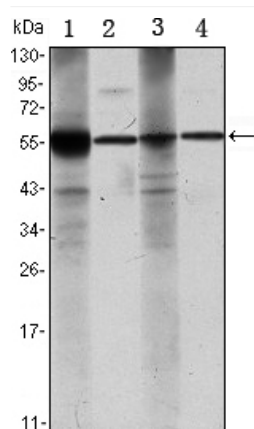
matters needing attention

Avoid repeated freezing and thawing!

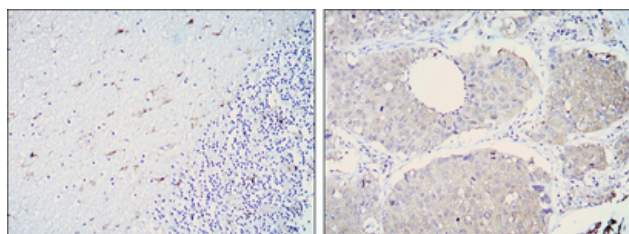
Usage suggestions

This product can be used in immunological reaction related experiments. For more information, please consult technical personnel.

Products Images



Western Blot analysis using ALDH1A1 Monoclonal Antibody against Raji (1), Jurkat (2), THP-1 (3) and K562 (4) cell lysate.



Immunohistochemistry analysis of paraffin-embedded cerebellum tissues (left) and lung cancer (right) with DAB staining using ALDH1A1 Monoclonal Antibody.