



pNO40 Polyclonal Antibody

Catalog No	BYab-01944
Isotype	IgG
Reactivity	Human;Mouse
Applications	IHC;IF;ELISA
Gene Name	ZCCHC17
Protein Name	Nucleolar protein of 40 kDa
Immunogen	The antiserum was produced against synthesized peptide derived from human ZCCHC17. AA range:51-100
Specificity	pNO40 Polyclonal Antibody detects endogenous levels of pNO40 protein.
Formulation	Liquid in PBS containing 50% glycerol, 0.5% BSA and 0.02% sodium azide.
Source	Polyclonal, Rabbit,IgG
Purification	The antibody was affinity-purified from rabbit antiserum by affinity-chromatography using epitope-specific immunogen.
Dilution	IHC: 1/100 - 1/300. ELISA: 1/20000.. IF 1:50-200
Concentration	1 mg/ml
Purity	≥90%
Storage Stability	-20°C/1 year
Synonyms	ZCCHC17; PS1D; HSPC243; HSPC251; LDC4; Nucleolar protein of 40 kDa; pNO40; Pnn-interacting nucleolar protein; Putative S1 RNA-binding domain protein; PS1D protein; Zinc finger CCHC domain-containing protein 17
Observed Band	
Cell Pathway	Nucleus, nucleolus .
Tissue Specificity	Kidney,Muscle,Placenta,Retinoblastoma,Teratocarcinoma,Umbilical cor
Function	similarity:Contains 1 CCHC-type zinc finger.,similarity:Contains 1 S1 motif domain.,subunit:Interacts with PNN. Associates with the 60S ribosomal subunit.,
Background	similarity:Contains 1 CCHC-type zinc finger.,similarity:Contains 1 S1 motif domain.,subunit:Interacts with PNN. Associates with the 60S ribosomal subunit.,
matters needing attention	Avoid repeated freezing and thawing!

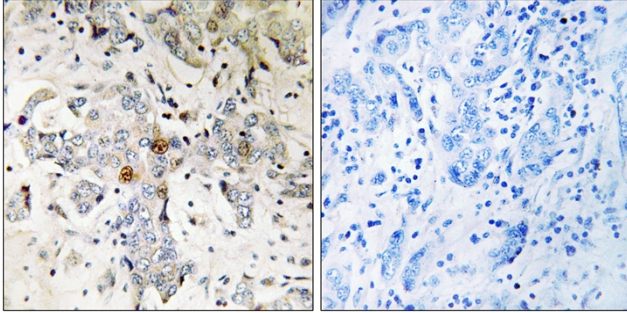
Nanjing BYabscience technology Co.,Ltd



Usage suggestions

This product can be used in immunological reaction related experiments. For more information, please consult technical personnel.

Products Images



Immunohistochemistry analysis of paraffin-embedded human breast carcinoma tissue, using ZCCHC17 Antibody. The picture on the right is blocked with the synthesized peptide.