



NFκB-p105/p50 Polyclonal Antibody

Catalog No	BYab-01906
Isotype	IgG
Reactivity	Human;Mouse;Rat
Applications	IF;WB;IHC;ELISA
Gene Name	NFKB1
Protein Name	Nuclear factor NF-kappa-B p105 subunit
Immunogen	The antiserum was produced against synthesized peptide derived from human NF-kappaB p105/p50. AA range:304-353
Specificity	NFκB-p105/p50 Polyclonal Antibody detects endogenous levels of NFκB-p105/p50 protein.
Formulation	Liquid in PBS containing 50% glycerol, 0.5% BSA and 0.02% sodium azide.
Source	Polyclonal, Rabbit,IgG
Purification	The antibody was affinity-purified from rabbit antiserum by affinity-chromatography using epitope-specific immunogen.
Dilution	IF: 1:50-200 Western Blot: 1/500 - 1/2000. Immunohistochemistry: 1/100 - 1/300. ELISA: 1/20000. Not yet tested in other applications.
Concentration	1 mg/ml
Purity	≥90%
Storage Stability	-20°C/1 year
Synonyms	NFKB1; Nuclear factor NF-kappa-B p105 subunit; DNA-binding factor KBF1; EBP-1; Nuclear factor of kappa light polypeptide gene enhancer in B-cells 1
Observed Band	
Cell Pathway	Nucleus. Cytoplasm. Nuclear, but also found in the cytoplasm in an inactive form complexed to an inhibitor (I-kappa-B).
Tissue Specificity	Muscle,Rectum tumor,Uterus,
Function	domain:Glycine-rich region (GRR) appears to be a critical element in the generation of p50.,domain:The C-terminus of p105 might be involved in cytoplasmic retention, inhibition of DNA-binding, and transcription activation.,function:NF-kappa-B is a pleiotropic transcription factor which is present in almost all cell types and is involved in many biological processes such as inflammation, immunity, differentiation, cell growth, tumorigenesis and apoptosis. NF-kappa-B is a homo- or heterodimeric complex formed by the Rel-like domain-containing proteins RELA/p65, RELB, NFKB1/p105, NFKB1/p50, REL and NFKB2/p52 and the heterodimeric p65-p50 complex appears to be most abundant one. The dimers bind at kappa-B sites in the DNA of their target genes

Nanjing BYabscience technology Co.,Ltd



and the individual dimers have distinct preferences for different kappa-B sites that they can bind with distinguishable affinity and specificity. Diff

Background

nuclear factor kappa B subunit 1(NFKB1) Homo sapiens This gene encodes a 105 kD protein which can undergo cotranslational processing by the 26S proteasome to produce a 50 kD protein. The 105 kD protein is a Rel protein-specific transcription inhibitor and the 50 kD protein is a DNA binding subunit of the NF-kappa-B (NFKB) protein complex. NFKB is a transcription regulator that is activated by various intra- and extra-cellular stimuli such as cytokines, oxidant-free radicals, ultraviolet irradiation, and bacterial or viral products. Activated NFKB translocates into the nucleus and stimulates the expression of genes involved in a wide variety of biological functions. Inappropriate activation of NFKB has been associated with a number of inflammatory diseases while persistent inhibition of NFKB leads to inappropriate immune cell development or delayed cell growth. Alternative splicing results in multiple transcript variants encoding different isof

matters needing attention

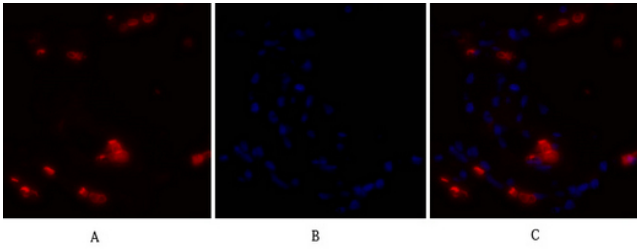
Avoid repeated freezing and thawing!

Usage suggestions

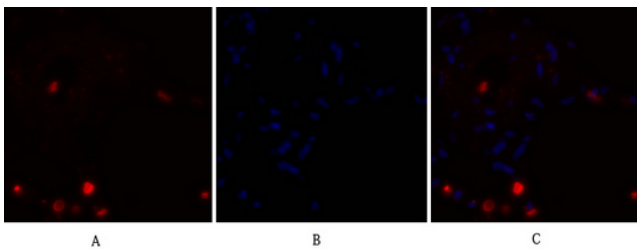
This product can be used in immunological reaction related experiments. For more information, please consult technical personnel.



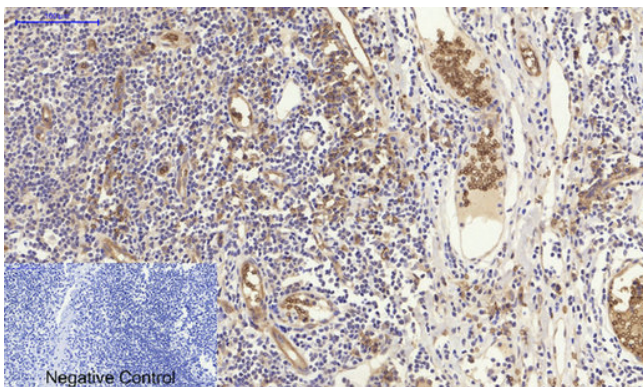
Products Images



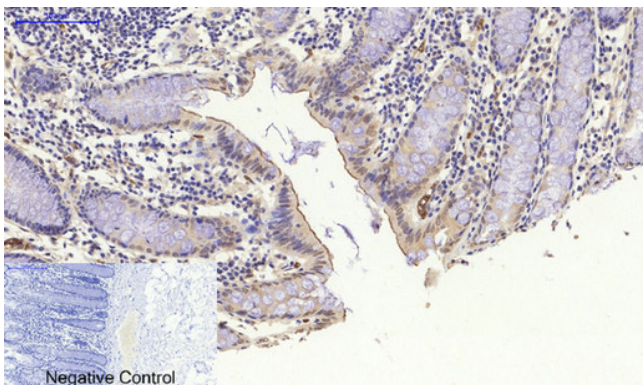
Immunofluorescence analysis of HeLa cell. 1, NFκB-p105/p50 Polyclonal Antibody (red) was diluted at 1:200 (4°C overnight). GAPDH Monoclonal Antibody (2B8) (green) was diluted at 1:200 (4°C overnight). 2, Goat Anti Rabbit Alexa Fluor 594 Catalog: RS3611 was diluted at 1:1000 (room temperature, 50min). Goat Anti Mouse Alexa Fluor 488 Catalog: RS3208 was diluted at 1:1000 (room temperature, 50min).



Immunofluorescence analysis of human-lung tissue. 1, NFκB-p105/p50 Polyclonal Antibody (red) was diluted at 1:200 (4°C overnight). 2, Cy3 labeled Secondary antibody was diluted at 1:300 (room temperature, 50min). 3, Picture B: DAPI (blue) 10min. Picture A: Target. Picture B: DAPI. Picture C: merge of A+B

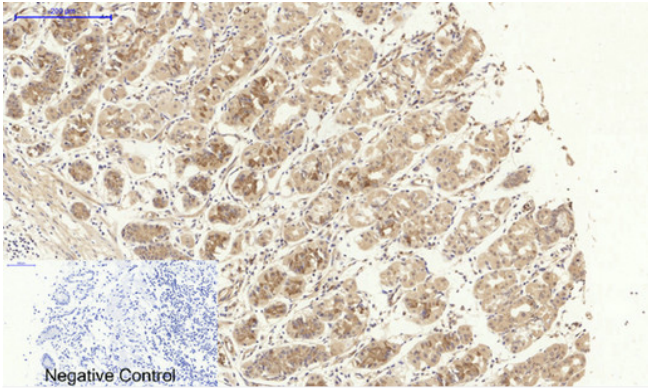


Immunofluorescence analysis of human-lung tissue. 1, NFκB-p105/p50 Polyclonal Antibody (red) was diluted at 1:200 (4°C overnight). 2, Cy3 labeled Secondary antibody was diluted at 1:300 (room temperature, 50min). 3, Picture B: DAPI (blue) 10min. Picture A: Target. Picture B: DAPI. Picture C: merge of A+B



Immunohistochemical analysis of paraffin-embedded Human-Tonsil tissue. 1, NFκB-p105/p50 Polyclonal Antibody was diluted at 1:200 (4°C overnight). 2, Sodium citrate pH 6.0 was used for antibody retrieval (>98°C, 20min). 3, Secondary antibody was diluted at 1:200 (room temperature, 30min). Negative control was used by secondary antibody only.

Nanjing BYabscience technology Co.,Ltd



Immunohistochemical analysis of paraffin-embedded Human-colon tissue. 1,NFκB-p105/p50 Polyclonal Antibody was diluted at 1:200(4°C,overnight). 2, Sodium citrate pH 6.0 was used for antibody retrieval(>98°C,20min). 3,Secondary antibody was diluted at 1:200(room tempeRature, 30min). Negative control was used by secondary antibody only.