



TTF-1 (phospho-Ser327) rabbit pAb

Catalog No	BYab-01481
Isotype	IgG
Reactivity	Human;Rat;Mouse;
Applications	WB
Gene Name	NKX2-1 NKX2A TTF1 TTF1
Protein Name	TTF-1 (Ser327)
Immunogen	Synthesized phosho peptide around human TTF-1 (Ser327)
Specificity	This antibody detects endogenous levels of Human TTF-1 (phospho-Ser327)
Formulation	Liquid in PBS containing 50% glycerol, 0.5% BSA and 0.02% sodium azide.
Source	Polyclonal, Rabbit,IgG
Purification	The antibody was affinity-purified from rabbit serum by affinity-chromatography using specific immunogen.
Dilution	WB 1:1000-2000
Concentration	1 mg/ml
Purity	≥90%
Storage Stability	-20°C/1 year
Synonyms	Homeobox protein Nkx-2.1 (Homeobox protein NK-2 homolog A) (Thyroid nuclear factor 1) (Thyroid transcription factor 1) (TTF-1)
Observed Band	38kD
Cell Pathway	Nucleus .
Tissue Specificity	Thyroid and lung.
Function	disease:Defects in NKX2-1 are the cause of benign hereditary chorea (BHC) [MIM:118700]; also known as hereditary chorea without dementia. BHC is an autosomal dominant movement disorder. The early onset of symptoms (usually before the age of 5) and the observation that in some BHC families the symptoms tend to decrease in adulthood suggests that the disorder results from a developmental disturbance of the brain. BHC is non-progressive and patients have normal or slightly below normal intelligence. There is considerable inter- and intrafamilial variability, including dysarthria, axial dystonia and gait disturbances.,disease:Defects in NKX2-1 are the cause of choreoathetosis, hypothyroidism, and neonatal respiratory distress (CHNRD) [MIM:610978]. This syndrome include neurological, thyroid, and respiratory

Nanjing BYabscience technology Co.,Ltd



problems.,function:Transcription factor that binds and activates the promoter of thyro

Background

This gene encodes a protein initially identified as a thyroid-specific transcription factor. The encoded protein binds to the thyroglobulin promoter and regulates the expression of thyroid-specific genes but has also been shown to regulate the expression of genes involved in morphogenesis. Mutations and deletions in this gene are associated with benign hereditary chorea, choreoathetosis, congenital hypothyroidism, and neonatal respiratory distress, and may be associated with thyroid cancer. Multiple transcript variants encoding different isoforms have been found for this gene. This gene shares the symbol/alias 'TTF1' with another gene, transcription termination factor 1, which plays a role in ribosomal gene transcription. [provided by RefSeq, Feb 2014],

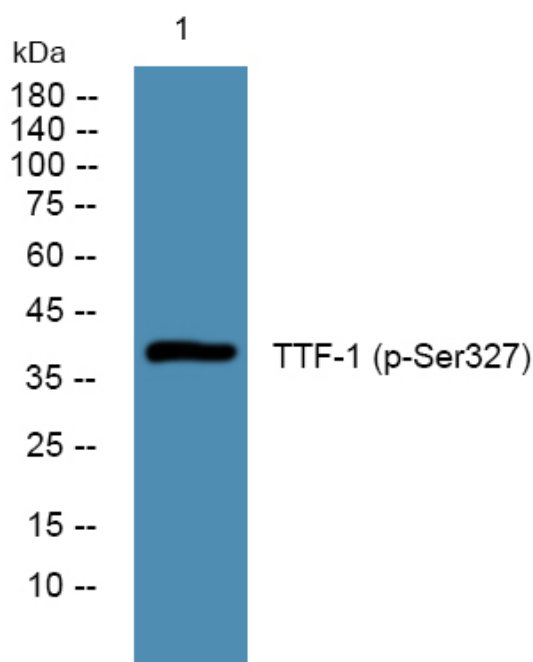
matters needing attention

Avoid repeated freezing and thawing!

Usage suggestions

This product can be used in immunological reaction related experiments. For more information, please consult technical personnel.

Products Images



Nanjing BYabscience technology Co.,Ltd

网址: www.njbybio.com

官方热线: 025-5229-8998

监督电话: 15950492658