



# β-Tubulin mouse mAb

<b>Catalog No</b>	BYab-01088
<b>Isotype</b>	IgG
<b>Reactivity</b>	Human;Mouse;Rat
<b>Applications</b>	WB
<b>Gene Name</b>	tubb
<b>Protein Name</b>	
<b>Immunogen</b>	Purified recombinant human Tubulin beta protein fragments expressed in E.coli.
<b>Specificity</b>	This antibody detects endogenous levels of Tubulin beta and does not cross-react with related proteins.
<b>Formulation</b>	Liquid in PBS containing 50% glycerol, 0.5% BSA and 0.02% sodium azide.
<b>Source</b>	Monoclonal, Mouse
<b>Purification</b>	The antibody was affinity-purified from mouse ascites by affinity-chromatography using epitope-specific immunogen.
<b>Dilution</b>	wb 1:1000
<b>Concentration</b>	1 mg/ml
<b>Purity</b>	≥90%
<b>Storage Stability</b>	-20°C/1 year
<b>Synonyms</b>	beta 4 tubulin;Beta 5 tubulin;beta 1b tubulin;M40;TUBB1;TUBB5;tubulin beta 1 chain; Tubulin beta 4 chain;tubulin beta 5 chain;Tubulin beta;Tubulin beta chain;tubulin beta polypeptide.
<b>Observed Band</b>	55kD
<b>Cell Pathway</b>	Cytoplasm, cytoskeleton .
<b>Tissue Specificity</b>	Ubiquitously expressed with highest levels in spleen, thymus and immature brain.
<b>Function</b>	domain:The highly acidic C-terminal region may bind cations such as calcium.,function:Tubulin is the major constituent of microtubules. It binds two moles of GTP, one at an exchangeable site on the beta chain and one at a non-exchangeable site on the alpha-chain.,online information:Tubulin entry,similarity:Belongs to the tubulin family.,subunit:Dimer of alpha and beta chains.,tissue specificity:Ubiquitously expressed with highest levels in spleen, thymus and immature brain.,
<b>Background</b>	This gene encodes a beta tubulin protein. This protein forms a dimer with alpha tubulin and acts as a structural component of microtubules. Mutations in this gene

**Nanjing BYabscience technology Co.,Ltd**



cause cortical dysplasia, complex, with other brain malformations 6. Alternative splicing results in multiple splice variants. There are multiple pseudogenes for this gene on chromosomes 1, 6, 7, 8, 9, and 13. [provided by RefSeq, Jun 2014],

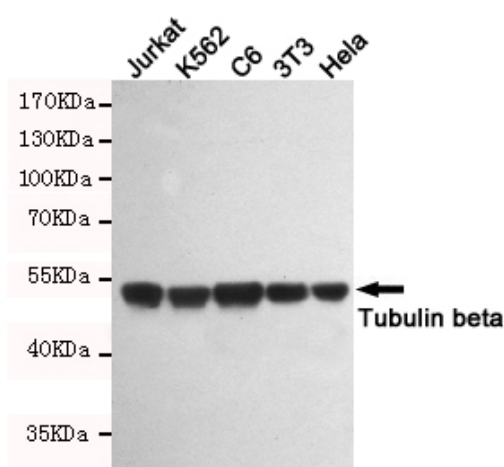
**matters needing attention**

Avoid repeated freezing and thawing!

**Usage suggestions**

This product can be used in immunological reaction related experiments. For more information, please consult technical personnel.

**Products Images**



Western blot detection of Tubulin beta in Jurkat, K562, C6, 3T3 and Hela cell lysates and using Tubulin beta mouse mAb (1:1000 diluted). Predicted band size: 55KDa. Observed band size: 55KDa.