



β-Tubulin mouse mAb

Catalog No	BYab-01087
Isotype	IgG
Reactivity	Human;Mouse;Monkey;Goat;Hamster;Rat;chlamydomonas
Applications	WB;IF
Gene Name	tubb
Protein Name	
Immunogen	Purified recombinant human Tubulin beta protein fragments expressed in E.coli.
Specificity	This antibody detects endogenous levels of Tubulin beta and does not cross-react with related proteins.
Formulation	Liquid in PBS containing 50% glycerol, 0.5% BSA and 0.02% sodium azide.
Source	Monoclonal, Mouse
Purification	The antibody was affinity-purified from mouse ascites by affinity-chromatography using epitope-specific immunogen.
Dilution	wb 1:5000 icc 1:500. IF 1:50-200
Concentration	1 mg/ml
Purity	≥90%
Storage Stability	-20°C/1 year
Synonyms	beta 4 tubulin;Beta 5 tubulin;beta 1b tubulin;M40;TUBB1;TUBB5;tubulin beta 1 chain; Tubulin beta 4 chain;tubulin beta 5 chain;Tubulin beta;Tubulin beta chain;tubulin beta polypeptide.
Observed Band	55kD
Cell Pathway	Cytoplasm, cytoskeleton .
Tissue Specificity	Ubiquitously expressed with highest levels in spleen, thymus and immature brain.
Function	domain:The highly acidic C-terminal region may bind cations such as calcium.,function:Tubulin is the major constituent of microtubules. It binds two moles of GTP, one at an exchangeable site on the beta chain and one at a non-exchangeable site on the alpha-chain.,online information:Tubulin entry,similarity:Belongs to the tubulin family.,subunit:Dimer of alpha and beta chains.,tissue specificity:Ubiquitously expressed with highest levels in spleen, thymus and immature brain.,
Background	This gene encodes a beta tubulin protein. This protein forms a dimer with alpha tubulin and acts as a structural component of microtubules. Mutations in this gene

Nanjing BYabscience technology Co.,Ltd



cause cortical dysplasia, complex, with other brain malformations 6. Alternative splicing results in multiple splice variants. There are multiple pseudogenes for this gene on chromosomes 1, 6, 7, 8, 9, and 13. [provided by RefSeq, Jun 2014],

matters needing attention

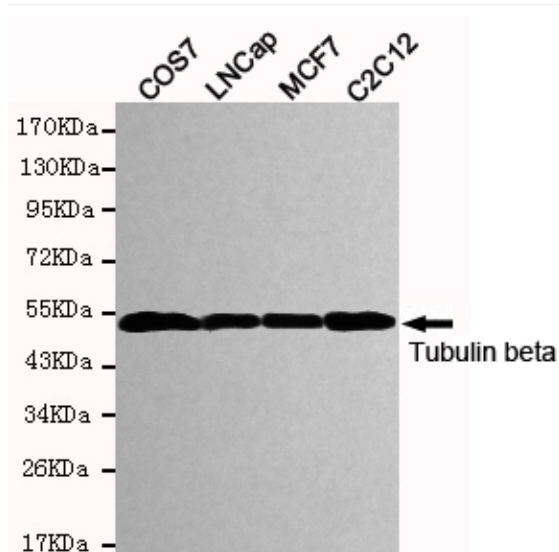
Avoid repeated freezing and thawing!

Usage suggestions

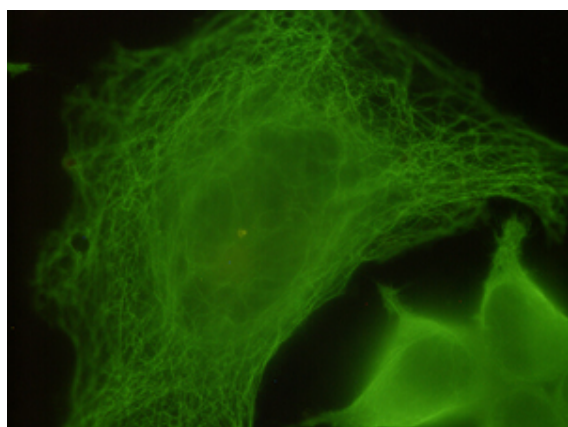
This product can be used in immunological reaction related experiments. For more information, please consult technical personnel.



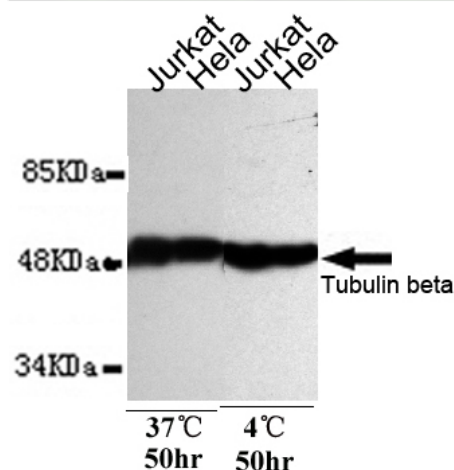
Products Images



Western blot detection of Tubulin beta in COS7, LNCap, MCF7 and C2C12 cell lysates and using Tubulin beta mouse mAb (1:5000 diluted). Predicted band size: 55KDa. Observed band size: 55KDa.

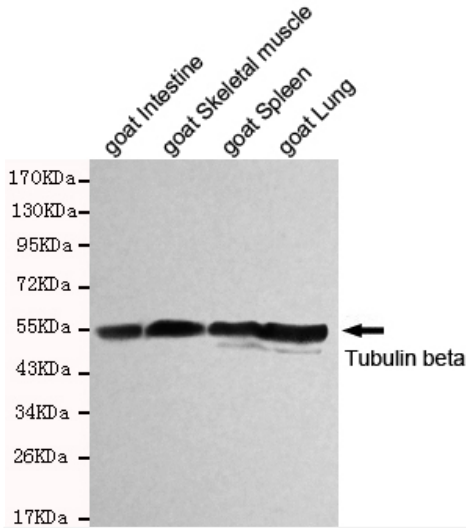


Immunocytochemistry staining of HeLa cells fixed with 4% paraformaldehyde and using anti-Tubulin beta mouse mAb (dilution 1:500).

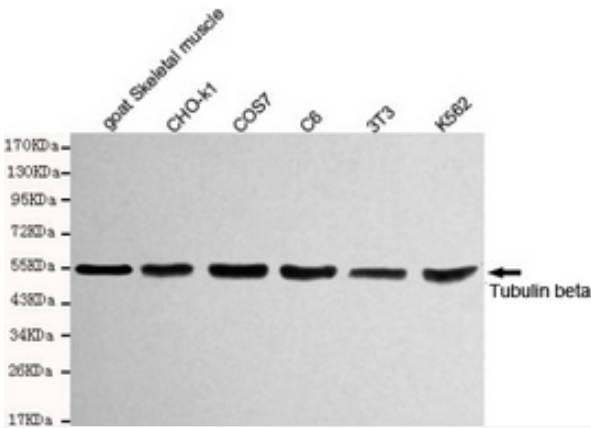


Tubulin beta antibody's stability test under 37°C 50 hours compare to 4°C 50 hours.

Nanjing BYabs science technology Co., Ltd



Western blot detection of Tubulin beta in goat intestine, goat skeletal muscle, goat spleen and goat lung cell lysates using Tubulin beta mouse mAb (1:5000-1:10000 diluted). Predicted band size: 55KDa. Observed band size: 55KDa.



Western blot detection of Tubulin beta in Goat skeletal muscle, CHO-k1, COS7, C6, 3T3 and K562 cell lysates using Tubulin beta mouse mAb (1:5000 diluted). Predicted band size: 55KDa. Observed band size: 55KDa. Exposure time: 10sec.