



TORC3 Monoclonal Antibody

Catalog No	BYab-01032
Isotype	IgG
Reactivity	Human;Monkey
Applications	WB;IHC;IF;ELISA
Gene Name	CRTC3
Protein Name	CREB-regulated transcription coactivator 3
Immunogen	Purified recombinant fragment of human TORC3 expressed in E. Coli.
Specificity	TORC3 Monoclonal Antibody detects endogenous levels of TORC3 protein.
Formulation	Ascitic fluid containing 0.03% sodium azide,0.5% BSA, 50%glycerol.
Source	Monoclonal, Mouse
Purification	Affinity purification
Dilution	Western Blot: 1/500 - 1/2000. Immunohistochemistry: 1/200 - 1/1000. Immunofluorescence: 1/200 - 1/1000. ELISA: 1/10000. Not yet tested in other applications.
Concentration	1 mg/ml
Purity	≥90%
Storage Stability	-20°C/1 year
Synonyms	CRTC3; TORC3; CREB-regulated transcription coactivator 3; Transducer of regulated cAMP response element-binding protein 3; TORC-3; Transducer of CREB protein 3
Observed Band	
Cell Pathway	Nucleus . Cytoplasm . Appears to be mainly nuclear (PubMed:15454081). Translocates to the nucleus following adenylyl cyclase or MAP kinase activation (PubMed:30611118). .
Tissue Specificity	Predominantly expressed in B and T lymphocytes. Highest levels in lung. Also expressed in brain, colon, heart, kidney, ovary, and prostate. Weak expression in liver, pancreas, muscle, small intestine, spleen and stomach.
Function	function:Transcriptional coactivator for CREB1 which activates transcription through both consensus and variant cAMP response element (CRE) sites. Acts as a coactivator, in the SIK/TORC signaling pathway, being active when dephosphorylated and acts independently of CREB1 'Ser-133' phosphorylation. Enhances the interaction of CREB1 with TAF4. Regulates the expression of specific CREB-activated genes such as the steroidogenic gene, StAR. Potent coactivator of PPARGC1A and inducer of mitochondrial biogenesis in muscle

Nanjing BYabscience technology Co.,Ltd



cells. Also coactivator for TAX activation of the human T-cell leukemia virus type 1 (HTLV-1) long terminal repeats (LTR).,similarity:Belongs to the TORC family.,subcellular location:Appears to be mainly nuclear.,subunit:Binding, as a tetramer, through its N-terminal region, with the bZIP domain of CREB1 enhances recruitment of TAF4 to the promoter. 'Arg-314' in the bZIP domai

Background

This gene is a member of the CREB regulated transcription coactivator gene family. This family regulates CREB-dependent gene transcription in a phosphorylation-independent manner and may be selective for cAMP-responsive genes. The protein encoded by this gene may induce mitochondrial biogenesis and attenuate catecholamine signaling in adipose tissue. A translocation event between this gene and Notch coactivator mastermind-like gene 2, which results in a fusion protein, has been reported in mucoepidermoid carcinomas. Alternative splicing results in multiple transcript variants that encode different protein isoforms. [provided by RefSeq, Jul 2012],

matters needing attention

Avoid repeated freezing and thawing!

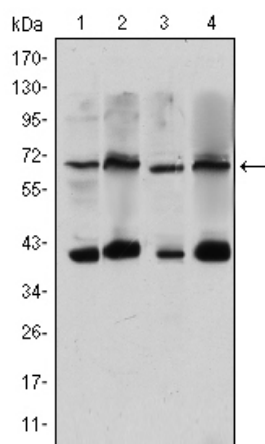
Usage suggestions

This product can be used in immunological reaction related experiments. For more information, please consult technical personnel.

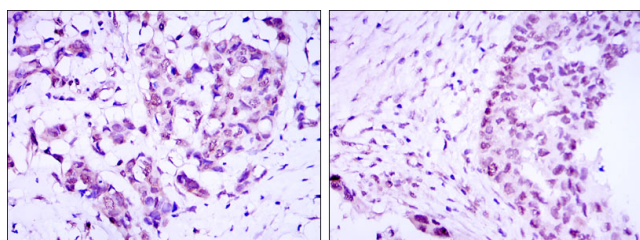
Nanjing BYabscience technology Co.,Ltd



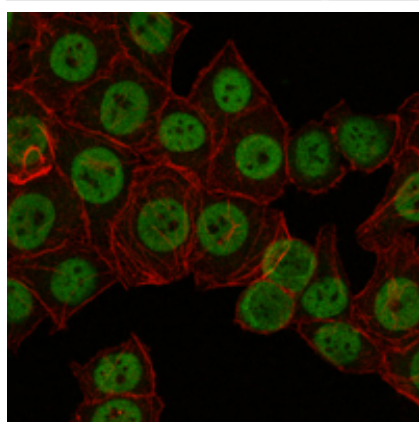
Products Images



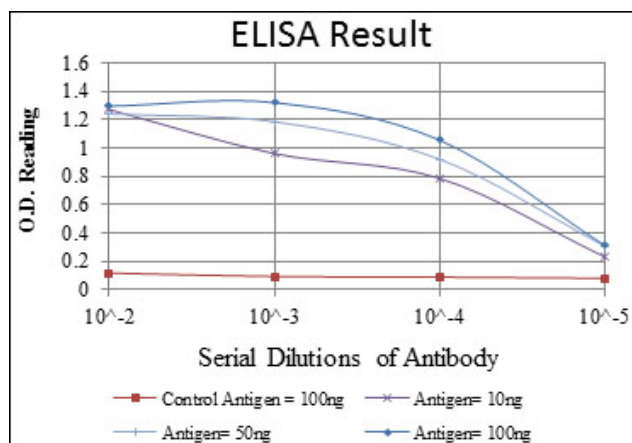
Western Blot analysis using TORC3 Monoclonal Antibody against HeLa (1), Jurkat (2), Cos7 (3) and MCF-7 (4) cell lysate.



Immunohistochemistry analysis of paraffin-embedded breast cancer (left) and ovarian cancer (right) with DAB staining using TORC3 Monoclonal Antibody.



Immunofluorescence analysis of NTERA-2 cells using TORC3 Monoclonal Antibody (green). Red: Actin filaments have been labeled with Alexa Fluor-555 phalloidin.



Nanjing BYabscience technology Co.,Ltd

网址: www.njbybio.com

官方热线: 025-5229-8998

监督电话: 15950492658