



THAP11 Monoclonal Antibody

Catalog No	BYab-01027
Isotype	IgG
Reactivity	Human
Applications	WB;IHC;IF;FCM;ELISA
Gene Name	THAP11
Protein Name	THAP domain-containing protein 11
Immunogen	Purified recombinant fragment of human THAP11 expressed in E. Coli.
Specificity	THAP11 Monoclonal Antibody detects endogenous levels of THAP11 protein.
Formulation	Ascitic fluid containing 0.03% sodium azide,0.5% BSA, 50%glycerol.
Source	Monoclonal, Mouse
Purification	Affinity purification
Dilution	Western Blot: 1/500 - 1/2000. Immunohistochemistry: 1/200 - 1/1000. Immunofluorescence: 1/200 - 1/1000. Flow cytometry: 1/200 - 1/400. ELISA: 1/10000. Not yet tested in other applications.
Concentration	1 mg/ml
Purity	≥90%
Storage Stability	-20°C/1 year
Synonyms	THAP11; HRIHFB2206; THAP domain-containing protein 11
Observed Band	
Cell Pathway	Nucleus . Cytoplasm . May be regulated by shuttling of the protein between the cytoplasm and nucleus. .
Tissue Specificity	Brain,Neuroblastoma,Uterus,
Function	function:Transcriptional repressor that plays a central role for embryogenesis and the pluripotency of embryonic stem (ES) cells. Sequence-specific DNA-binding factor that represses gene expression in pluripotent ES cells by directly binding to key genetic loci and recruiting epigenetic modifiers.,polymorphism:The length of the poly-Gln region is variable in the population.,similarity:Belongs to the THAP11 family.,similarity:Contains 1 THAP-type zinc finger.,subcellular location:May be regulated by shuttling of the protein between the cytoplasm and nucleus.,subunit:Interacts (via coiled coil domain) with HCFC1.,
Background	The protein encoded by this gene contains a THAP domain, which is a conserved DNA-binding domain that has striking similarity to the site-specific DNA-binding domain (DBD) of Drosophila P element transposases. [provided by

Nanjing BYabscience technology Co.,Ltd



RefSeq, Jul 2008],

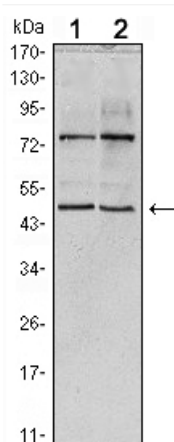
matters needing attention

Avoid repeated freezing and thawing!

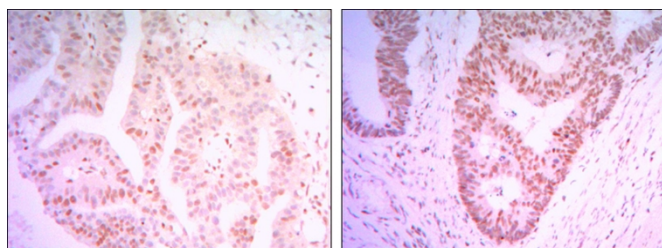
Usage suggestions

This product can be used in immunological reaction related experiments. For more information, please consult technical personnel.

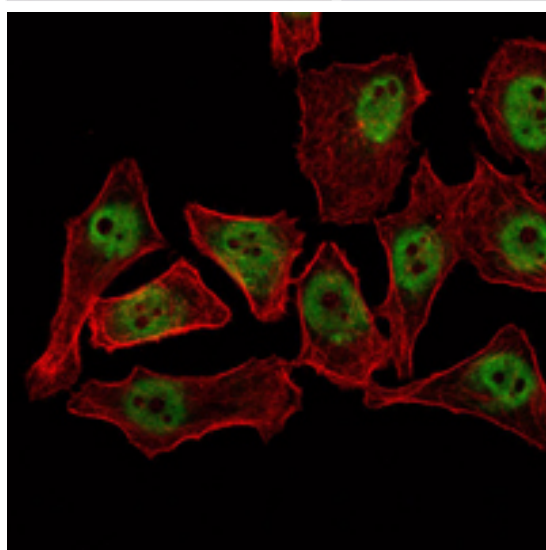
Products Images



Western Blot analysis using THAP11 Monoclonal Antibody against HeLa (1) and NTERA-2 (2) cell lysate.



Immunohistochemistry analysis of paraffin-embedded colon cancer tissues (left) and ovary cancer tissues (right) with DAB staining using THAP11 Monoclonal Antibody.



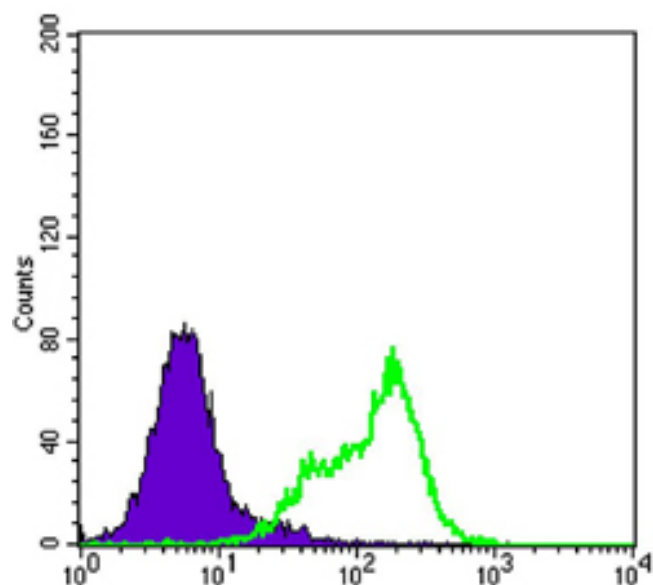
Immunofluorescence analysis of NTERA-2 cells using THAP11 Monoclonal Antibody (green). Red: Actin filaments have been labeled with Alexa Fluor-555 phalloidin.

Nanjing BYabscience technology Co.,Ltd

网址: www.njbybio.com

官方热线: 025-5229-8998

监督电话: 15950492658



Flow cytometric analysis of Hela cells using THAP11 Monoclonal Antibody (green) and negative control (purple).