



# RUNX1 Monoclonal Antibody

<b>Catalog No</b>	BYab-01015
<b>Isotype</b>	IgG
<b>Reactivity</b>	Human
<b>Applications</b>	WB;IF;ELISA
<b>Gene Name</b>	RUNX1
<b>Protein Name</b>	Runt-related transcription factor 1
<b>Immunogen</b>	Synthesized peptide of human RUNX1.
<b>Specificity</b>	RUNX1 Monoclonal Antibody detects endogenous levels of RUNX1 protein.
<b>Formulation</b>	Ascitic fluid containing 0.03% sodium azide,0.5% BSA, 50%glycerol.
<b>Source</b>	Monoclonal, Mouse
<b>Purification</b>	Affinity purification
<b>Dilution</b>	Western Blot: 1/500 - 1/2000. Immunofluorescence: 1/200 - 1/1000. ELISA: 1/10000. Not yet tested in other applications.
<b>Concentration</b>	1 mg/ml
<b>Purity</b>	≥90%
<b>Storage Stability</b>	-20°C/1 year
<b>Synonyms</b>	RUNX1; AML1; CBFA2; Runt-related transcription factor 1; Acute myeloid leukemia 1 protein; Core-binding factor subunit alpha-2; CBF-alpha-2; Oncogene AML-1; Polyomavirus enhancer-binding protein 2 alpha B subunit; PEA2-alpha B; PEBP2-alpha
<b>Observed Band</b>	
<b>Cell Pathway</b>	Nucleus.
<b>Tissue Specificity</b>	Expressed in all tissues examined except brain and heart. Highest levels in thymus, bone marrow and peripheral blood.
<b>Function</b>	alternative products:Additional isoforms seem to exist,caution:The fusion of AML1 with EAP in T-MDS induces a change of reading frame in the latter resulting in 17 AA unrelated to those of EAP.,disease:A chromosomal aberration involving RUNX1/AML1 is a cause of chronic myelogenous leukemia (CML). Translocation t(3;21)(q26;q22) with EAP, MSD1 or EVI1.,disease:A chromosomal aberration involving RUNX1/AML1 is a cause of chronic myelomonocytic leukemia. Inversion inv(21)(q21;q22) with USP16.,disease:A chromosomal aberration involving RUNX1/AML1 is a cause of M2 type acute myeloid leukemia (AML-M2). Translocation t(8;21)(q22;q22) with RUNX1T1/MTG8/ETO.,disease:A

**Nanjing BYabscience technology Co.,Ltd**



chromosomal aberration involving RUNX1/AML1 is a cause of therapy-related myelodysplastic syndrome (T-MDS). Translocation t(3;21)(q26;q22) with EAP, MSD1 or EVI1.,disease:A chromosomal aberration involving RUNX1/AML1 is found in child

**Background**

Core binding factor (CBF) is a heterodimeric transcription factor that binds to the core element of many enhancers and promoters. The protein encoded by this gene represents the alpha subunit of CBF and is thought to be involved in the development of normal hematopoiesis. Chromosomal translocations involving this gene are well-documented and have been associated with several types of leukemia. Three transcript variants encoding different isoforms have been found for this gene. [provided by RefSeq, Jul 2008],

**matters needing attention**

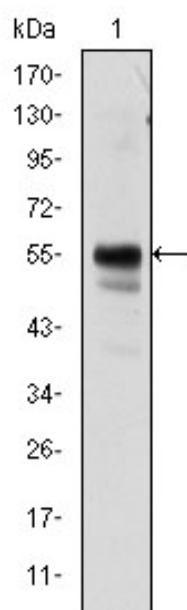
Avoid repeated freezing and thawing!

**Usage suggestions**

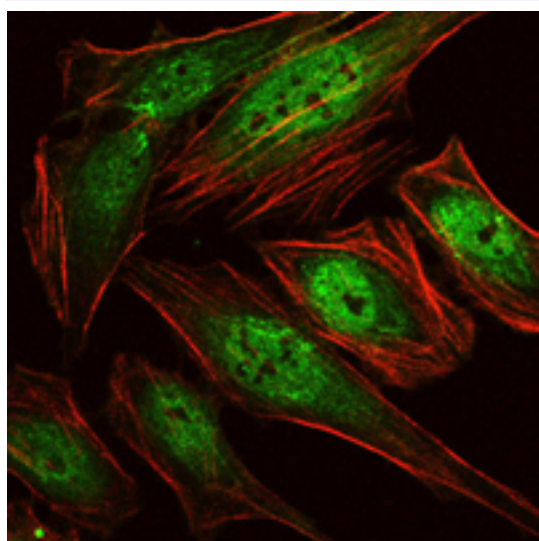
This product can be used in immunological reaction related experiments. For more information, please consult technical personnel.



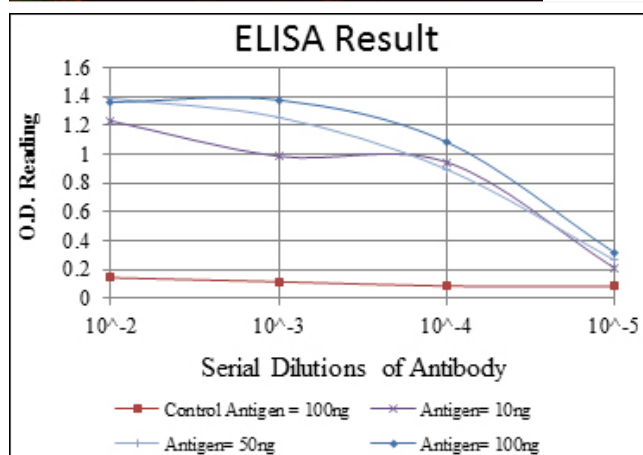
## Products Images



Western Blot analysis using RUNX1 Monoclonal Antibody against Jurkat cell lysate.



Immunofluorescence analysis of HeLa cells using RUNX1 Monoclonal Antibody (green). Red: Actin filaments have been labeled with Alexa Fluor-555 phalloidin.



Nanjing BYabs science technology Co.,Ltd



Nanjing BYabscience technology Co.,Ltd

网址: [www.njbybio.com](http://www.njbybio.com)

官方热线: 025-5229-8998

监督电话: 15950492658