



SEC22B Polyclonal Antibody

Catalog No	BYab-00776
Isotype	IgG
Reactivity	Human;Mouse;Rat
Applications	WB;IHC;IF;ELISA
Gene Name	SEC22B
Protein Name	Vesicle-trafficking protein SEC22b
Immunogen	Synthesized peptide derived from the Internal region of human SEC22B.
Specificity	SEC22B Polyclonal Antibody detects endogenous levels of SEC22B protein.
Formulation	Liquid in PBS containing 50% glycerol, 0.5% BSA and 0.02% sodium azide.
Source	Polyclonal, Rabbit,IgG
Purification	The antibody was affinity-purified from rabbit antiserum by affinity-chromatography using epitope-specific immunogen.
Dilution	WB: 1/500 - 1/2000. IHC-p: 1:100-1:300. ELISA: 1/10000.. IF 1:50-200
Concentration	1 mg/ml
Purity	≥90%
Storage Stability	-20°C/1 year
Synonyms	SEC22B; SEC22L1; Vesicle-trafficking protein SEC22b; ER-Golgi SNARE of 24 kDa; ERS-24; ERS24; SEC22 vesicle-trafficking protein homolog B; SEC22 vesicle-trafficking protein-like 1
Observed Band	23kD
Cell Pathway	Endoplasmic reticulum membrane ; Single-pass type IV membrane protein . Endoplasmic reticulum-Golgi intermediate compartment membrane . Golgi apparatus, cis-Golgi network membrane . Golgi apparatus, trans-Golgi network membrane . Melanosome . Concentrated most in the intermediate compartment/cis-Golgi network and the cis-Golgi cisternae 1 and 2. Greatly reduced in concentration at the trans end of the Golgi apparatus (By similarity). Identified by mass spectrometry in melanosome fractions from stage I to stage IV (PubMed:17081065). .
Tissue Specificity	Caudate nucleus,Platelet,Skin,Umbilical cor
Function	function:SNARE involved in targeting and fusion of ER-derived transport vesicles with the Golgi complex as well as Golgi-derived retrograde transport vesicles with the ER.,PTM:Phosphorylated upon DNA damage, probably by ATM or

Nanjing BYabscience technology Co.,Ltd



ATR.,similarity:Belongs to the synaptobrevin family.,similarity:Contains 1 longin domain.,similarity:Contains 1 v-SNARE coiled-coil homology domain.,subcellular location:Identified by mass spectrometry in melanosome fractions from stage I to stage IV.,subunit:Component of two distinct SNARE complexes consisting of STX5, GOSR2/BOS1, BET1 and SEC22B or STX18, USE1L, BNIP1/SEC20L and SEC22B. YKT6 can probably replace SEC22B in either complex.,

Background

The protein encoded by this gene is a member of the SEC22 family of vesicle trafficking proteins. It seems to complex with SNARE and it is thought to play a role in the ER-Golgi protein trafficking. This protein has strong similarity to Mus musculus and Cricetulus griseus proteins.[provided by RefSeq, Sep 2009],

matters needing attention

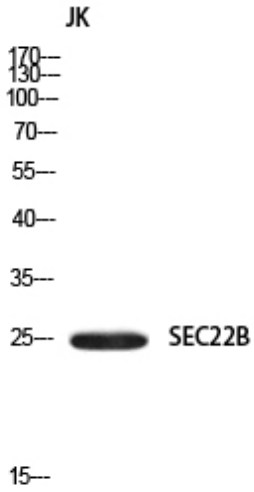
Avoid repeated freezing and thawing!

Usage suggestions

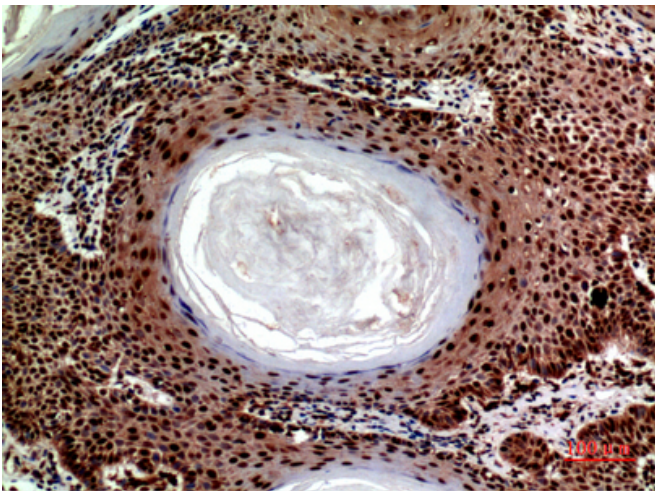
This product can be used in immunological reaction related experiments. For more information, please consult technical personnel.



Products Images



Western blot analysis of JK using SEC22B antibody.
Secondary antibody(catalog#:RS0002) was diluted at
1:20000



Immunohistochemical analysis of paraffin-embedded
human-skin, antibody was diluted at 1:100