



VAMP-1/2/3 Polyclonal Antibody

Catalog No	BYab-00753
Isotype	IgG
Reactivity	Human;Mouse;Rat
Applications	WB;IHC;IF;ELISA
Gene Name	VAMP1/VAMP2/VAMP3
Protein Name	Vesicle-associated membrane protein 1/2/3
Immunogen	The antiserum was produced against synthesized peptide derived from human VAMP-1/2/3. AA range:21-70
Specificity	VAMP-1/2/3 Polyclonal Antibody detects endogenous levels of VAMP-1/2/3 protein.
Formulation	Liquid in PBS containing 50% glycerol, 0.5% BSA and 0.02% sodium azide.
Source	Polyclonal, Rabbit,IgG
Purification	The antibody was affinity-purified from rabbit antiserum by affinity-chromatography using epitope-specific immunogen.
Dilution	IHC: 1/100 - 1/300. ELISA: 1/10000.. IF 1:50-200
Concentration	1 mg/ml
Purity	≥90%
Storage Stability	-20°C/1 year
Synonyms	VAMP1; SYB1; Vesicle-associated membrane protein 1; VAMP-1; Synaptobrevin-1; VAMP2; SYB2; Vesicle-associated membrane protein 2; VAMP-2; Synaptobrevin-2; VAMP3; SYB3; Vesicle-associated membrane protein 3; VAMP-3; Cellubrevin; CEB; Synaptob
Observed Band	13kD
Cell Pathway	[Isoform 1]: Cytoplasmic vesicle, secretory vesicle, synaptic vesicle membrane ; Single-pass type IV membrane protein . Cell junction, synapse, synaptosome .; [Isoform 2]: Cytoplasmic vesicle membrane ; Single-pass type IV membrane protein . Cell junction, synapse, synaptosome .; [Isoform 3]: Mitochondrion outer membrane; Single-pass type IV membrane protein .
Tissue Specificity	Nervous system, skeletal muscle and adipose tissue.
Function	function:Involved in the targeting and/or fusion of transport vesicles to their target membrane.,similarity:Belongs to the synaptobrevin family.,similarity:Contains 1 v-SNARE coiled-coil homology domain.,subunit:Interacts with VAPA and VAPB.,tissue specificity:Nervous system, skeletal muscle and adipose tissue.,

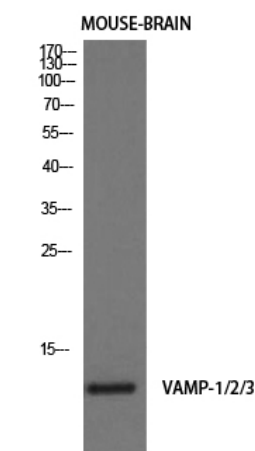
Nanjing BYabscience technology Co.,Ltd



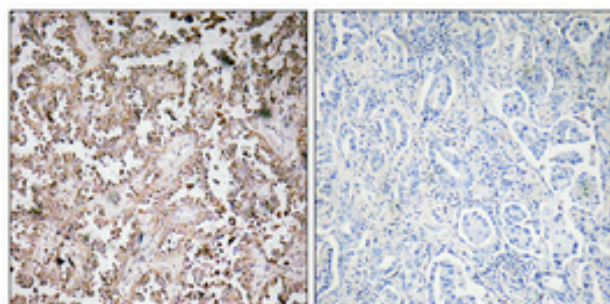
Background	Synapotobrevins, syntaxins, and the synaptosomal-associated protein SNAP25 are the main components of a protein complex involved in the docking and/or fusion of synaptic vesicles with the presynaptic membrane. The protein encoded by this gene is a member of the vesicle-associated membrane protein (VAMP)/synaptobrevin family. Mutations in this gene are associated with autosomal dominant spastic ataxia 1. Multiple alternative splice variants have been described, but the full-length nature of some variants has not been defined. [provided by RefSeq, Jul 2014],
matters needing attention	Avoid repeated freezing and thawing!
Usage suggestions	This product can be used in immunological reaction related experiments. For more information, please consult technical personnel.



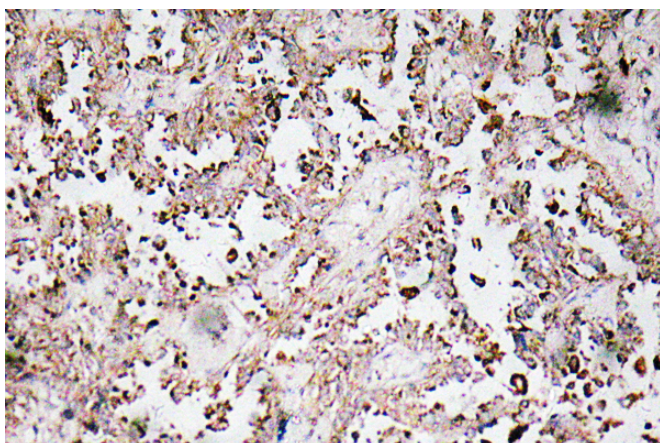
Products Images



Western Blot analysis of mouse-brain cells using VAMP-1/2/3 Polyclonal Antibody diluted at 1:1000. Secondary antibody(catalog#:RS0002) was diluted at 1:20000



Immunohistochemical analysis of paraffin-embedded Human lung cancer. Antibody was diluted at 1:100(4° overnight). High-pressure and temperature Tris-EDTA,pH8.0 was used for antigen retrieval. Negative contrl (right) obtained from antibody was pre-absorbed by immunogen peptide.



Immunohistochemistry analysis of VAMP-1/2/3 antibody in paraffin-embedded human lung carcinoma tissue.