



Synaptotagmin Polyclonal Antibody

Catalog No	BYab-00741
Isotype	IgG
Reactivity	Human;Mouse;Rat
Applications	WB;IHC;IF;ELISA
Gene Name	SYT1/SYT2
Protein Name	Synaptotagmin-1/2
Immunogen	The antiserum was produced against synthesized peptide derived from human Synaptotagmin. AA range:276-325
Specificity	Synaptotagmin Polyclonal Antibody detects endogenous levels of Synaptotagmin protein.
Formulation	Liquid in PBS containing 50% glycerol, 0.5% BSA and 0.02% sodium azide.
Source	Polyclonal, Rabbit,IgG
Purification	The antibody was affinity-purified from rabbit antiserum by affinity-chromatography using epitope-specific immunogen.
Dilution	WB: 1/500 - 1/2000. IHC: 1/100 - 1/300. ELISA: 1/20000.. IF 1:50-200
Concentration	1 mg/ml
Purity	≥90%
Storage Stability	-20°C/1 year
Synonyms	SYT1; SVP65; SYT; Synaptotagmin-1; Synaptotagmin I; SytI; p65; SYT2; Synaptotagmin-2; Synaptotagmin II; SytII
Observed Band	50kD
Cell Pathway	Cytoplasmic vesicle, secretory vesicle membrane ; Single-pass membrane protein . Cytoplasmic vesicle, secretory vesicle, synaptic vesicle membrane ; Single-pass membrane protein . Cytoplasmic vesicle, secretory vesicle, chromaffin granule membrane ; Single-pass membrane protein . Cytoplasm .
Tissue Specificity	Expressed in melanocytes (PubMed:23999003).
Function	cofactor: Binds 3 calcium ions per subunit. The ions are bound to the C2 domains., domain: The first C2 domain mediates Ca(2+)-dependent phospholipid binding., domain: The second C2 domain mediates interaction with SV2A and STN2., function: May have a regulatory role in the membrane interactions during trafficking of synaptic vesicles at the active zone of the synapse. It binds acidic phospholipids with a specificity that requires the presence of both an acidic head group and a diacyl backbone. A Ca(2+)-dependent interaction between synaptotagmin and putative receptors for activated protein kinase C has also

Nanjing BYabscience technology Co.,Ltd



been reported. It can bind to at least three additional proteins in a Ca(2+)-independent manner; these are neuexins, syntaxin and AP2.,similarity:Belongs to the synaptotagmin family.,similarity:Contains 2 C2 domains.,subcellular location:Synaptic vesicles and chromaffin granules.,subunit:H

Background

The synaptotagmins are integral membrane proteins of synaptic vesicles thought to serve as Ca(2+) sensors in the process of vesicular trafficking and exocytosis. Calcium binding to synaptotagmin-1 participates in triggering neurotransmitter release at the synapse (Fernandez-Chacon et al., 2001 [PubMed 11242035]).[supplied by OMIM, Jul 2010],

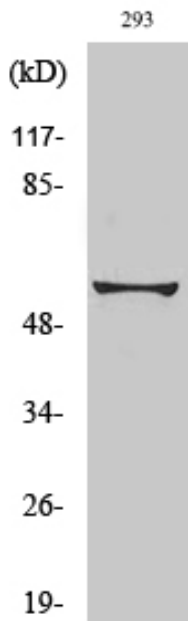
matters needing attention

Avoid repeated freezing and thawing!

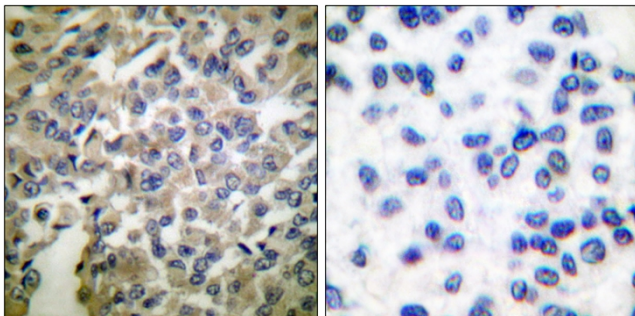
Usage suggestions

This product can be used in immunological reaction related experiments. For more information, please consult technical personnel.

Products Images

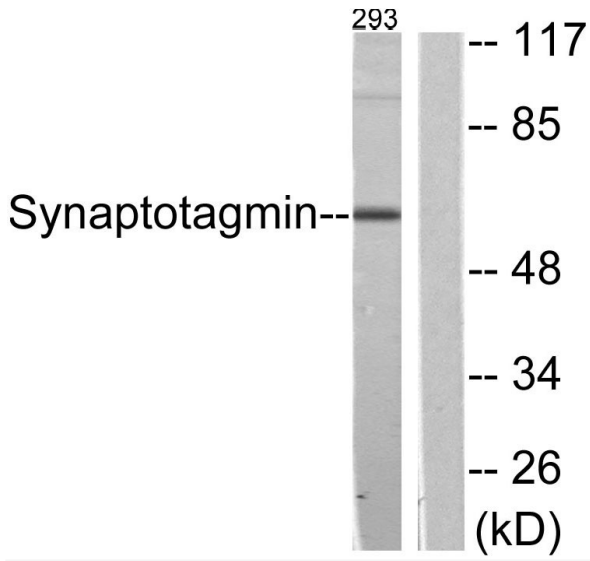


Western Blot analysis of various cells using Synaptotagmin Polyclonal Antibody diluted at 1:2000



Immunohistochemistry analysis of paraffin-embedded human breast carcinoma tissue, using Synaptotagmin Antibody. The picture on the right is blocked with the synthesized peptide.

Nanjing BYabscience technology Co.,Ltd



Western blot analysis of lysates from 293 cells, treated with Forskolin 40nM 30', using Synaptotagmin Antibody. The lane on the right is blocked with the synthesized peptide.