



ApoM Monoclonal Antibody

Catalog No	BYab-00607
Isotype	IgG
Reactivity	Human
Applications	WB;IF;ELISA
Gene Name	APOM
Protein Name	Apolipoprotein M
Immunogen	Purified recombinant fragment of ApoM expressed in E. Coli.
Specificity	ApoM Monoclonal Antibody detects endogenous levels of ApoM protein.
Formulation	Purified antibody in PBS containing 0.03% sodium azide.
Source	Monoclonal, Mouse
Purification	Affinity purification
Dilution	Western Blot: 1/500 - 1/2000. Immunofluorescence: 1/200 - 1/1000. ELISA: 1/10000. Not yet tested in other applications.
Concentration	1 mg/ml
Purity	≥90%
Storage Stability	-20°C/1 year
Synonyms	APOM; G3A; NG20; HSPC336; Apolipoprotein M; Apo-M; ApoM; Protein G3a
Observed Band	
Cell Pathway	Secreted . Present in high density lipoprotein (HDL) and to a lesser extent in triglyceride-rich lipoproteins (TGRLP) and low density lipoproteins (LDL).
Tissue Specificity	Plasma protein. Expressed in liver and kidney.
Function	function:Probably involved in lipid transport.,similarity:Belongs to the calycin superfamily. Lipocalin family. Highly divergent.,subcellular location:Present in high density lipoprotein (HDL) and to a lesser extent in triglyceride-rich lipoproteins (TGRLP) and low density lipoproteins (LDL).,tissue specificity:Plasma protein. Expressed in liver and kidney.,
Background	The protein encoded by this gene is an apolipoprotein and member of the lipocalin protein family. It is found associated with high density lipoproteins and to a lesser extent with low density lipoproteins and triglyceride-rich lipoproteins. The encoded protein is secreted through the plasma membrane but remains membrane-bound, where it is involved in lipid transport. Alternate splicing results in both coding and non-coding variants of this gene. [provided by RefSeq, Jan 2012],

Nanjing BYabscience technology Co.,Ltd



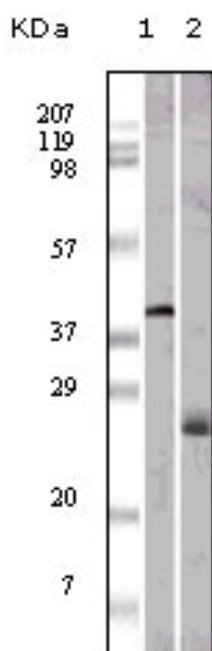
matters needing attention

Avoid repeated freezing and thawing!

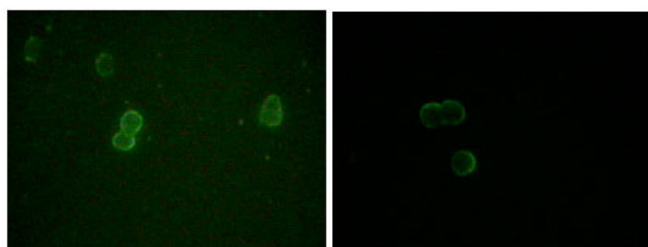
Usage suggestions

This product can be used in immunological reaction related experiments. For more information, please consult technical personnel.

Products Images



Western Blot analysis using ApoM Monoclonal Antibody against GST-ApoM recombinant protein (1) and human serum (2).



Immunofluorescence analysis of methanol-fixed L-02 (left) and Cos7 (right) cells using ApoM Monoclonal Antibody showing cytoplasmic and membrane localization.

Nanjing BYabs science technology Co.,Ltd

网址: www.njbybio.com

官方热线: 025-5229-8998

监督电话: 15950492658