



# ApoM Monoclonal Antibody

<b>Catalog No</b>	BYab-00606
<b>Isotype</b>	IgG
<b>Reactivity</b>	Human
<b>Applications</b>	WB;IF;ELISA
<b>Gene Name</b>	APOM
<b>Protein Name</b>	Apolipoprotein M
<b>Immunogen</b>	Purified recombinant fragment of human ApoM expressed in E. Coli.
<b>Specificity</b>	ApoM Monoclonal Antibody detects endogenous levels of ApoM protein.
<b>Formulation</b>	Purified antibody in PBS containing 0.03% sodium azide.
<b>Source</b>	Monoclonal, Mouse
<b>Purification</b>	Affinity purification
<b>Dilution</b>	Western Blot: 1/500 - 1/2000. Immunofluorescence: 1/200 - 1/1000. ELISA: 1/10000. Not yet tested in other applications.
<b>Concentration</b>	1 mg/ml
<b>Purity</b>	≥90%
<b>Storage Stability</b>	-20°C/1 year
<b>Synonyms</b>	APOM; G3A; NG20; HSPC336; Apolipoprotein M; Apo-M; ApoM; Protein G3a
<b>Observed Band</b>	
<b>Cell Pathway</b>	Secreted . Present in high density lipoprotein (HDL) and to a lesser extent in triglyceride-rich lipoproteins (TGRLP) and low density lipoproteins (LDL).
<b>Tissue Specificity</b>	Plasma protein. Expressed in liver and kidney.
<b>Function</b>	function:Probably involved in lipid transport.,similarity:Belongs to the calycin superfamily. Lipocalin family. Highly divergent.,subcellular location:Present in high density lipoprotein (HDL) and to a lesser extent in triglyceride-rich lipoproteins (TGRLP) and low density lipoproteins (LDL).,tissue specificity:Plasma protein. Expressed in liver and kidney.,
<b>Background</b>	The protein encoded by this gene is an apolipoprotein and member of the lipocalin protein family. It is found associated with high density lipoproteins and to a lesser extent with low density lipoproteins and triglyceride-rich lipoproteins. The encoded protein is secreted through the plasma membrane but remains membrane-bound, where it is involved in lipid transport. Alternate splicing results in both coding and non-coding variants of this gene. [provided by RefSeq, Jan 2012],

**Nanjing BYabs science technology Co.,Ltd**



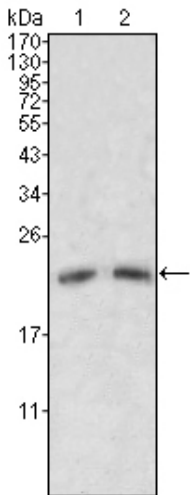
**matters needing attention**

Avoid repeated freezing and thawing!

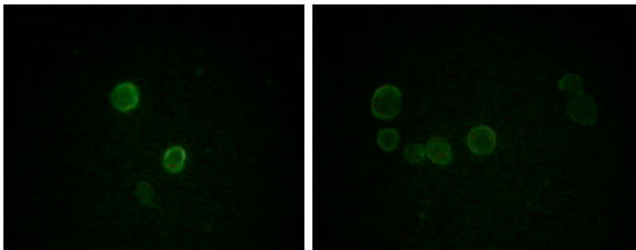
**Usage suggestions**

This product can be used in immunological reaction related experiments. For more information, please consult technical personnel.

**Products Images**



Western Blot analysis using ApoM Monoclonal Antibody against human serum (1, 2).



Immunofluorescence analysis of methanol-fixed L-02 (left) and Cos7 (right) cells using ApoM Monoclonal Antibody showing cytoplasmic and membrane localization.

**Nanjing BYabs science technology Co.,Ltd**

网址: [www.njbybio.com](http://www.njbybio.com)

官方热线: 025-5229-8998

监督电话: 15950492658